



The Healing Powers of Gems

by Richard Shaw Brown, PG

[Astral Gemstone Talismans](#)

The healing powers of gemstones are derived from the special metaphysical and astrological cosmic influences of their associated ruling planets. This is called, in part, the "piezoelectric" effect. Late Prof. B. Suryanarain Rao states that "Men are continuously subjected to the influences of Planetary rays." These planetary rays are radiated as gravitational, electrical and magnetic energy fields which are transmitted as light waves. These light waves can be measured from their smallest part as fractional parts of a millionth of an inch, to ones which are millions of millions of miles in length. Each of the nine planets (nava-graha) influences us according to its nature. Therefore, a knowledge of these planetary influences is essential to any understanding of gemstones and their healing powers.

The planetary gemological pandits of India explain that white light is actually composed of seven primary and two secondary colors blended together. The seven colors are red, orange, yellow, green, blue, indigo and violet; the other two colors are ultra-violet and infra-red. The seven

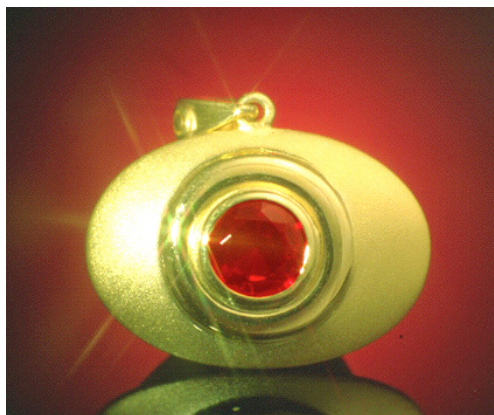
primary colors become visible in the form of a rainbow whenever white light is refracted through a prism or rain drops resulting in a [spectrum of light](#); but the two secondary colors, ultra-violet and infra-red, always remain invisible.

These nine colors are understood to be the cosmic matrix and very essence of the nine planets; and it is through these colors that the planets radiate their energy and influence. When the visible colored-light waves are measured, infra-red exhibits the longest wave length and ultra-violet, the shortest. It is important to note that the wave length of colored-light emanating from the nine planets is believed to match those radiating from each planet's corresponding gemstone(s). For example, the wave length of light emanating from the Sun is identical to that exhibited by a ruby--both are red. Although, not all gems exhibit their "cosmic color" such as white pearls, whose cosmic color is orange, or red coral, whose cosmic radiation is yellow, etc.

Among all the elements in nature, gemstones constitute the most condensed form of concentrated color. Gems provide an inexhaustible source of cosmic color rays.

The following is a list of the special healing influences exerted on human affairs by each of the nine planets along with the particular powers ascribed to their corresponding gemstones.

I. SUN (Surya)



If the Sun is exalted in your horoscope you will be well-read, pious, strong, compassionate and untroubled. But if the position of the Sun in one's horoscope is weak or afflicted then contrary results may be expected.

RED is the cosmic color transmitted by rubies and other natural red gems. Red color waves are hot and therefore useful in curing diseases caused by excessive cold and moisture in the body, viz. cold, flu, anaemia, low blood pressure, heart and circulatory problems, as well as foolish behavior and learning deficiencies. In addition, Solar gemstones confer courage, eliminate sadness, moderate excess sensuality, and help elevate one's status in society.

GEMSTONES ruled by the Sun are natural ruby, red spinel, red garnet, rubellite and other natural pink or red gems with crystal clear transparency. In order to properly transmit solar energy, Sun stones must be flawless (eye clean) and should be set in gold.

2. MOON (Chandra)



©2000 Astral Gemstone Talismans

If the Moon is exalted in your horoscope you will be wealthy, industrious and respected. But if the position of the Moon is weak or afflicted then contrary results may be expected. Diabetes, alcohol and drug abuse, and all types of emotional distress are also associated with debilitated Lunar energy. ORANGE is the cosmic color transmitted by pearls and other Lunar gems. Orange color waves are cold and therefore useful in treating diseases of the bodily secretions and blood caused by excessive heat in the body. Fine Moon jewels are known to be helpful in cases of mental

derangement's caused by an excess of heat in the heart and brain. Moon astral talismans will also enhance all mental faculties, pacify emotions, induce tranquility, and improve artistic creativity.

GEMSTONES ruled by the Moon are natural pearl & moonstone. Flawless (eye clean) stones are required in order for Moon astral talismans to properly transmit beneficial Lunar energy.

3. JUPITER (Brihaspati)



If Jupiter is exalted in your horoscope you will be a leader of men, powerful, respected, although susceptible to anger. But if the position of Jupiter in a person's horoscope is debilitated Jupiter can cause personal unhappiness, egotism, sloth, and legal problems. LIGHT BLUE is the cosmic color transmitted by yellow sapphires and other natural yellow gems. Light blue color waves, being very cold, relate to the ethereal nature and are helpful in curing diseases of the glands, the fat system and bodily cavities. Jupiter astral talismans are known to enhance spiritual understanding, facilitate pregnancy and childbirth, improve marital relations, increase one's fortune, and help balance the endocrine system. Jupiter jewels are known to be especially favorable to women by increasing their happiness and contentment.

GEMSTONES: Jupiter's energy is transmitted by natural yellow sapphires, topaz, citrine, heliodor, and other flawless (eye clean) yellow gems.

4. RAHU (Moon's North Node)



Persons with Rahu exalted in their birth chart are wealthy and fortunate. But those with a weak or afflicted Rahu in their horoscope have a tendency to suffer from fear of supernatural phenomena and suicidal impulses. **ULTRA-VIOLET** is the cosmic color transmitted by hessonite and other orange gems. Ultra-violet color waves are the coldest of all the cosmic rays and should be used for ailments caused by extreme over-heating, i.e., high fever, hyper-acidity, indigestion, hyper sexuality, insomnia, and during child birth. Rahu astral talismans may also help divert disasters, prevent insanity, counteract poisons, and protect one from demoniac influences. Rahu is particularly associated with scientific genius and the ability to deal successfully with people of lower status, such as servants, employees, and underworld characters.

GEMSTONES governed by Rahu include hessonite, spessertite, zircon (hyacinth), and other natural gems of golden-orange to brownish-orange hues. Only flawless (eye clean) stones transmit beneficial Rahu energy.

5. MERCURY (Budha)



If Mercury is well-placed in your horoscope you will be educated, happy, fortunate and highly respected. But if Mercury occupies a weak or harmful position in one's horoscope, one becomes prone to speech and hearing impediments, deceptive behavior, and lack of vitality. GREEN is the cosmic color transmitted by emeralds and other green gems. Green color waves relate to the earth element and are cold by nature. This color, being heavy, influences the heavy organs of the body such as the flesh, liver, kidneys and intestines. Mercury astral talismans are also known to enhance psychic powers, improve memory and learning, strengthen the nervous system, and provide protection against snakes and envious people.

GEMSTONES governed by Mercury include emerald, peridot, tsavorite, chrome tourmaline, chrome diopside, green jade and other natural green gems of flawless (eye clean) quality.

6. Venus (Shukra)

When Venus is exalted in the birth chart one will be humanitarian, long-lived and possess many good qualities. But if the position of Venus in one's horoscope is weak or afflicted, one becomes vulnerable to loss of libido,



impotence and sterility, venereal (lit. of Venus) complaints, and rapid aging. **INDIGO** is the cosmic color transmitted by diamonds and other colorless gems. This color influences all watery elements in the body, especially mucous and sperm. Venus astral talismans are known to induce purity of body and mind, confer artistic talent and worldly happiness, strengthen the bones, and improve the quality of all bodily secretions, such as mucous, hormones, and semen.

Venus transmits its cosmic energy through diamonds, quartz crystals, zircons, goshenites, white topaz, white sapphires, and other colorless gemstones with clear transparency.

7. KETU (The "South Node" of the Moon)



If Ketu is exalted in your birth chart you will be and wealthy and protected from evil. But if Ketu appears in a weak or harmful position in one's horoscope, one becomes prone to fatal diseases of a mysterious nature as well as compulsive gambling. INFRA-RED is the cosmic color transmitted by cat's eye gems. Infra-red color waves are the hottest of all the cosmic rays and are known to be useful in many chronic and terminal illness such as cancer and all forms of paralysis. Infra-red color also aids digestive problems and skin diseases. Ketu astral talismans can also enhance psychic powers, confer protection from hidden enemies, and avert dangers such as drowning, intoxication, and criminal punishment.

GEMSTONES ruled by Ketu include Cat's eye chrysoberyl, beryl, apatite, tourmaline and other yellow to greenish-brown gems which display a strong chatoyant "cat's eye" light reflection on the surface and often within the crystal when cabochon cut. These gems should also possess a high degree of transparency in order to properly transmit beneficial Ketu energy.

8. SATURN (Shani)



©Astral Gemstone Talismans 1993

When Saturn is exalted you will be long-lived, charitable, lavish, proficient and an affectionate mate. But if Saturn is weak in your horoscope, then you become vulnerable to headaches, neuralgia, and other disorders of the nervous system, as well as epilepsy, stupidity, and fainting. VIOLET is the

cosmic color transmitted by blue sapphires and other natural blue to violet gems. Violet color waves are related to Saturn, the planet which governs suffering and poverty. Saturn also rules the entire nervous system. Therefore, most diseases of the nerves, such as neuroses and nervous tension may be caused by an afflicted Saturn. Saturn being the slowest planet also causes diseases of a chronic nature and can cause delays if ill-disposed. Saturn Astral Talismans are known to help strengthen a person's nervous system. They also repel envy from others, avert demoniac influences, provide protection against dangers during travel, make one more serious and far-sighted, and induce mental tranquility.

Saturn transmits its cosmic energy through blue sapphires, blue spinels, tanzanite, indicolite, iolite, amethyst and other natural blue to violet gems with transparent clarity. Only flawless gems possess the capacity to properly transmit positive astral energy from Saturn.

9. MARS (Mangala)



When Mars is exalted in the horoscope one has great energy, is learned, well-known and regal, But if Mars is located in a weak or afflicted position in one's horoscope one becomes prone to boils (due to impure blood),

unstable blood pressure, anaemia, and violence. YELLOW is the cosmic color transmitted by coral and other ochre colored gems. Yellow color waves are related to the lymph nodes, bone marrow, blood, and head. Mars astral talismans may help to strengthen these vital elements. They also help avert violence and warfare, moderate lust, improve finances, and reduce mental depression

Gemstones ruled by Mars include natural coral and red carnelian. As always, the use of fine quality gems, free of defects, is imperative for transmission of auspicious astral energy rays.

IMPORTANT NOTE: It is never advisable to employ planetary gem therapy as anything more than an adjunct without also taking full advantage of a doctor licensed to practice medicine in line with the established medical profession.